



H10 London Waterloo

London

★★★★

284 to 302 Waterloo Road · SE1 8RQ London · United Kingdom
T +44 (0) 207 928 4062
h10.london.waterloo@h10hotels.com
hotelh10londonwaterloo.com

 [@h10londonwaterloo](https://www.instagram.com/h10londonwaterloo)

 [@H10.London.Waterloo](https://www.facebook.com/H10.London.Waterloo)

H10 London Waterloo is located on the well-known Waterloo Road, in South Bank, a 5-minute walk from Waterloo Station. A fantastic location that's very close to some of the city's main points of interest, such as Parliament, Big Ben, Westminster Abbey and the London Eye.

Points of interest

300 m/0.2 miles from Lambeth North Station (Bakerloo line)

450 m/0.3 miles from Waterloo Station (Jubilee, Bakerloo, Northern lines)

Train:

450 m/0.3 miles from Waterloo Station

1.7 km/1.1 miles from Charing Cross Station

2.7 km/1.7 miles from Victoria Station

4.9 km/3.1 miles from King's Cross/Saint Pancras (EUROSTAR) station

Airport:

14 km/8 miles from London City Airport

30 km/18 miles from Heathrow Airport

46 km/29 miles from Luton Airport

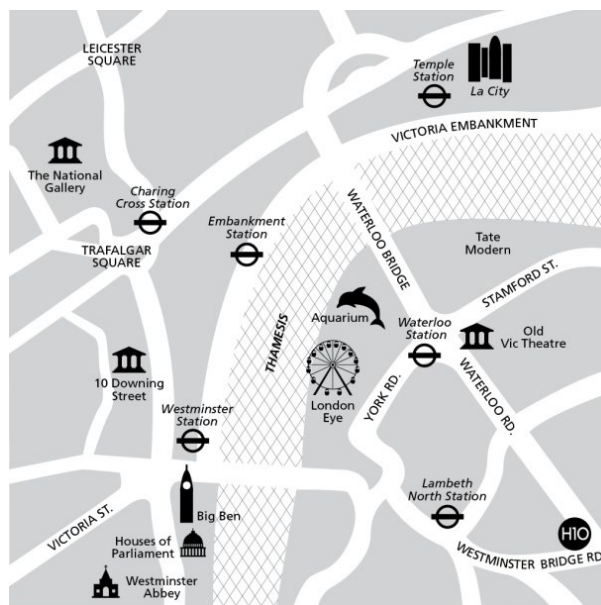
50 km/31 miles from Stansted and Gatwick airports

Tourist points of interest:

900 m/0.6 miles from the London Eye

2.2 km/1.4 miles from Big Ben/Parliament/Westminster Abbey

Coordinates: 51° 29' 55.9818" N / 0° 6' 22.6548" W



Description

Located in the South Bank area, near Parliament and Big Ben, the London Eye and Tower Bridge, H10 London Waterloo is an excellent choice for a stay in London. The hotel features newly refurbished facilities, fine cuisine, two meeting rooms and the exclusive Rooftop Waterloo Sky Bar overlooking the city, offering spectacular views.

170 Rooms

Free Wi-Fi throughout the hotel

Three O Two Restaurant

Circus Bar

Waterloo Sky Bar on the 8th floor, with breathtaking views of the city

Two meeting rooms



ROOMS



H10 London Waterloo has modern, bright rooms, with laminated wood floors and all the amenities to ensure your wellness:

- 42" LCD TV with international channels and Chromecast
- USB charger and international plug sockets
- Minibar (\$ according to consumption)
- Kettle (restocked daily)
- Free in-room safe
- Iron and ironing board
- Deluxe topper
- Climate control system
- Fully equipped bathroom with professional hairdryer, magnifying mirror and sustainable dispensers from the Earth Collection



CLASSIC ROOMS

Elegant 19 m² rooms with picture windows overlooking the street. Featuring one queen-size bed (1.80 x 2 m) or two twin beds (0.90 x 2 m).

They can accommodate up to 2 adults.



CLASSIC SUPERIOR ROOMS

19 m² double rooms with a queen-size bed (1.80 x 2 m) or two twin beds (0.90 x 2 m). They are located on the top floors of the hotel and boast large picture windows offering panoramic views of the city.

They can accommodate up to 2 adults and 1 kid.



CLASSIC SUPERIOR SKY VIEW ROOMS

Newly renovated 19 m² (205 ft²) room on the 8th floor and above, located on the upper floors of the hotel for stunning views of the city. It features wooden floors, a full-length mirror, and stylish walk-in showers. It has a queen-size bed (1.80 x 2 m) or two single beds (1.05 x 2 m).

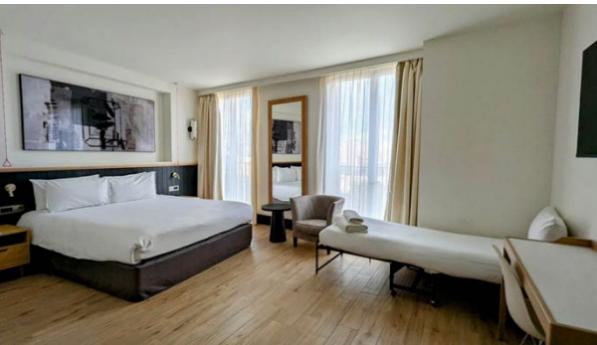
It can accommodate up to 2 adults and 1 child.



CLASSIC TRIPLE ROOMS

25 m² (269 ft²) room with elegant décor and large windows overlooking the street. It has a king-size bed (2 x 2 m) or two single beds (1 x 2 m).

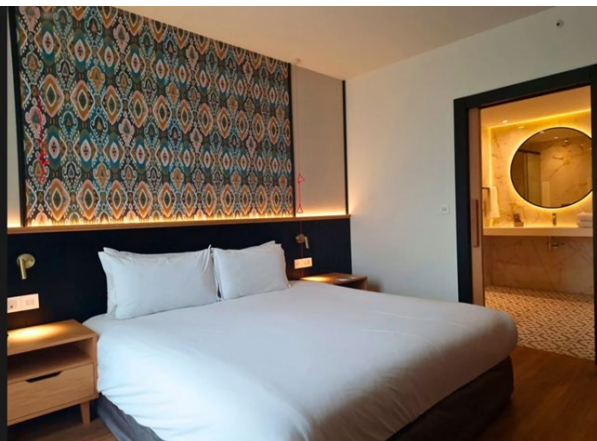
It can accommodate up to 3 adults and 2 children.



CLASSIC SUPERIOR TRIPLE ROOMS

Recently renovated 25 m² triple room offering street views, wooden floors, a full-length mirror, and stylish walk-in showers. The room is furnished with a sofa bed, ideal for families or three adults. It has 1 queen-size bed (1.80 x 2.00 m) and 2 single beds (1.20 x 2.00 m).

It can accommodate up to 3 adults and 2 children.





JUNIOR SUITE SKY VIEW

New 40 m2 Junior Suite rooms located on the top floors of the hotel. It has a king-size bed (2 x 2 m) and large picture windows with magnificent views of the London skyline. In addition to the standard services of the other rooms, the Junior Suite Sky View also offers:

- Welcome gift
- Complimentary bottle of cava
- 49" smart TV
- Sofa bed
- Nespresso machine with 100% compostable pods, restocked daily
- Bathrobe and slippers, ceramic hob, high-speed ionic hair dryer, hand-held steamer.
- Courtesy umbrella

It can accommodate up to 3 adults and 2 children.

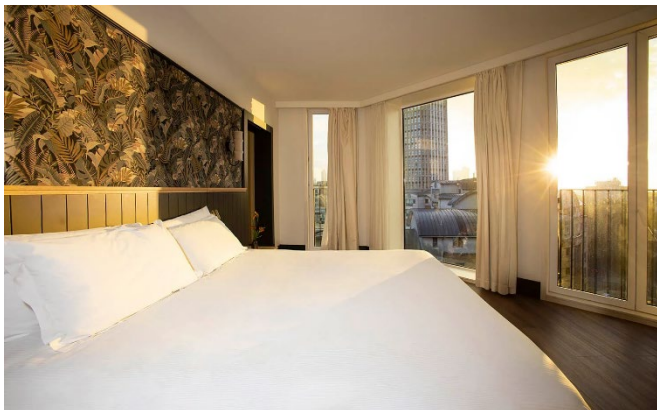


JUNIOR SUITE LONDON EYE

New Junior Suite London Eye rooms of 36 m² located from the 9th floor upwards, offering spectacular views of the London Eye. They have a queen-size bed (1.80 x 2 m) and, in addition to the amenities available in the other rooms, they also offer:

- Welcome gift
- Complimentary bottle of cava
- 50" smart TV
- Sofa bed
- Nespresso machine with 100% compostable pods, restocked daily
- Bathrobe and slippers, ceramic hob, high-speed ionic hair dryer, hand-held steamer.
- Courtesy umbrella

It can accommodate up to 3 adults and 2 children.



SUITE SKY VIEW

Exclusive, recently renovated 40 m2 (430 ft2) suite on the 9th floor, with stunning views of the city. This sophisticated suite includes two separate spaces and two bathrooms; one equipped with an elegant bathtub and a separate shower. In addition to the general amenities, they also offer:

- Welcome gift
- Complimentary bottle of cava
- 49" smart TV
- Sofa bed
- Nespresso machine with 100% compostable pods, restocked daily
- Bathrobe and slippers, ceramic hob, high-speed ionic hair dryer, hand-held steamer.
- Courtesy umbrella

It can accommodate up to 3 adults and 2 children.

Note: room décor, size and views may vary depending on the room allocated.



RESTAURANTS AND BARS



RESTAURANTE THREE O TWO*

A modern à la carte restaurant located on the first floor with large windows overlooking the street. It offers a full breakfast made with high-quality products, as well as an evening menu inspired by Spanish cuisine.



CIRCUS BAR

Located in the hotel lobby, the Circus Bar menu offers classic international cocktail options, as well as snacks such as salads and sandwiches.



WATERLOO SKY BAR*

Located on the 8th floor of the hotel, it has a terrace with stunning views of the London skyline. It is the ideal place to enjoy a pleasant evening in a cosmopolitan atmosphere, offering trendy cocktails and international classics, as well as an interesting tapas menu.

*Bar service and access to the terrace may not be available depending on the season.



SERVICES AND EXPERIENCES



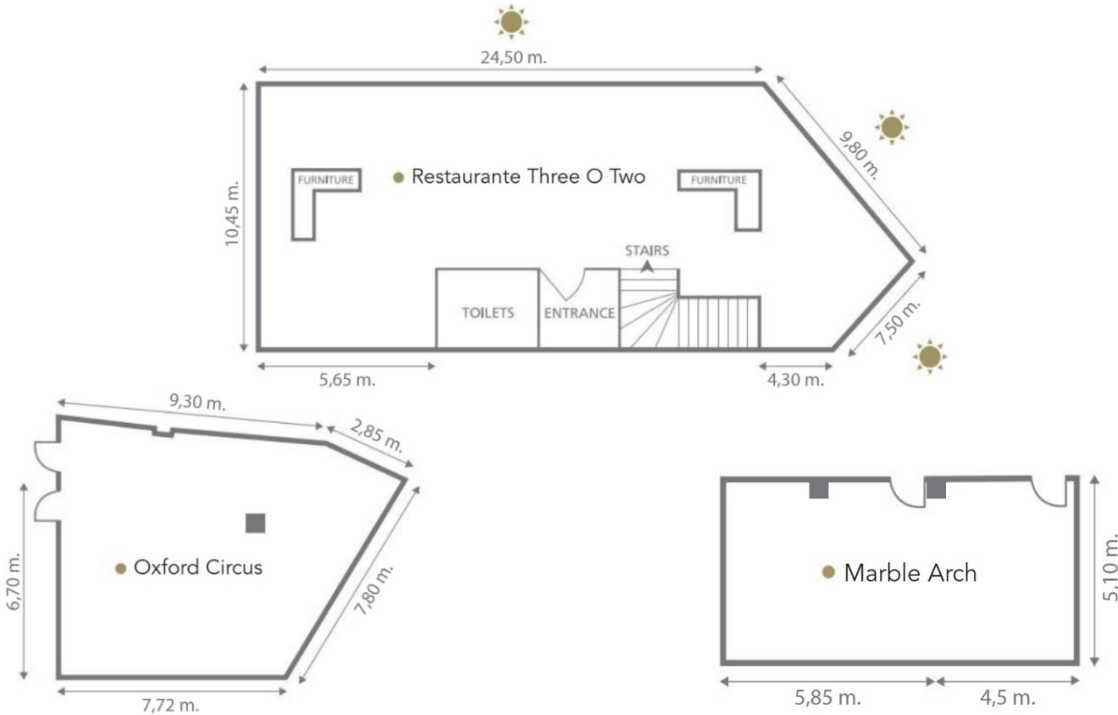
H10 London Waterloo has two meeting rooms equipped with everything necessary to hold work meetings. In addition, the Three O Two Restaurant, with natural light, offers an exclusive space for any kind of celebration or event.

MEETINGS & EVENTS H10 HOTELS

CAPACITY

| Spaces for events | m ² | ft ² | Height | Drinks reception | Theatre | School | Boardroom | Banquet | Cabaret | "U" | "O" |
|------------------------|----------------|-----------------|--------|------------------|---------|--------|-----------|---------|---------|-----|-----|
| OXFORD CIRCUS* | 80 | 861 | 3 m | 60 | 60 | 41 | 21 | 30 | 24 | 23 | 25 |
| MARBLE ARCH | 53 | 570 | 3 m | 25 | 36 | 24 | 22 | - | - | 21 | 23 |
| THREE O TWO RESTAURANT | 269 | 2895 | 3 m | 240 | - | - | 80 | 120 | - | - | - |

*There is a pillar at the left of the room. Maximum capacity (optimal) recommended for these spaces by event type.



Área y Capacidad · Area and Capacity

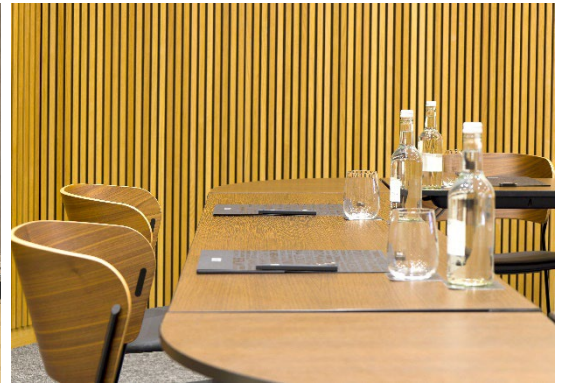
Luz Natural · Natural Light



OXFORD CIRCUS ROOM



COCKTAIL EN EL THREE O TWO



MARBLE ARCH ROOM

perfect day
Weddings
& Celebrations

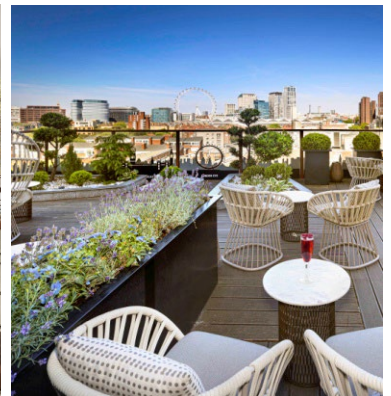
At **H10 London Waterloo**, we take care of every little detail, so your celebration turns out just how you dreamed it would. The hotel offers fine, signature cuisine, a professional, personalised service, as well as unique spaces for banquets or private events.



BANQUET IN THE THREE O TWO



BANQUET IN THE THREE O TWO



WATERLOO SKY BAR



QUALITY CERTIFICATIONS AND AWARDS



At H10 Hotels, we are committed to the environment, which is why we created Stay Green — a sustainability project aimed at developing a responsible business model based on three main areas of action: elimination of plastics and waste reduction, energy efficiency and use of green energy, and training and awareness programmes for both our employees and guests.



ODS destacados

As part of the Stay Green programme, the H10 London Waterloo hotel has implemented the following actions:

- Electricity from 100% renewable sources
- Tablets in reception to promote digitalisation and encourage paper saving
- The Hotel provides a city of London public transport card to every hotel employee

Awards and recognitions



BIOSPHERE TOURISM
BIOSPHERE SUSTAINABLE
2024



TÜV RHEINLAND
ISO 9001:2015
2024



H10 HOTELS
H10 QUALITY EXCELLENCE
MANAGEMENT SYSTEM
2024



BOOKING.COM
TRAVELLER REVIEW AWARD
2025, 2024, 2023, 2022, 2021



HOTELS.COM
LOVED BY GUESTS
2021



TRIPADVISOR
TOP 10 DE LAS CADENAS
HOTELERAS "MÁS
EXCELENTES" DEL MUNDO
2018



TRIPADVISOR
TRAVELLERS' CHOICE
2024, 2023, 2022, 2021, 2020



HOLIDAYCHECK
RECOMMENDED ON
HOLIDAYCHECK
2025, 2017



RESTAURANT GURU
RESTAURANTE
RECOMENDADO
"WATERLOO SKY BAR" - 2023



OPENTABLE
DINNERS' CHOICE
"THREE O TWO" - 2023



TRIVAGO
MEJOR DESAYUNO
2017

Information and bookings:
+34 900 444 466
reservas@h10hotels.com
h10hotels.com



Website

 [@h10hotels](https://www.instagram.com/h10hotels)
 [@H10.Hotels](https://www.facebook.com/H10.Hotels)
 [@h10hotels](https://www.tiktok.com/@h10hotels)



Web app hotel

